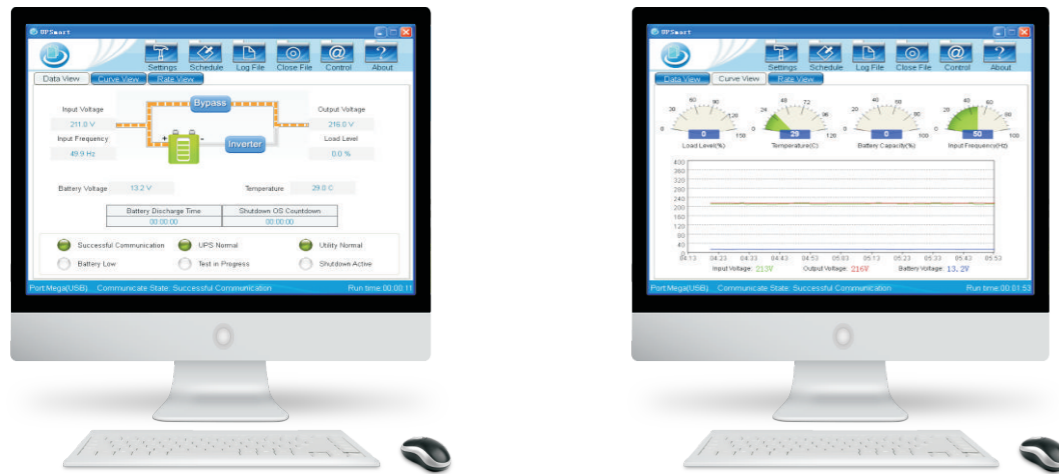


Mornitoring Software UPSmart



Product Introduction

UPSsmart is monitoring software for single UPS developed on RS232/USB interface. When mains input is normal, UPSsmart can display the input and output voltage, frequency, load, temperature and battery capacity etc with real time data curves; when mains input abnormal or other fault, UPSsmart can save the document automatically, system turn off safely, warning be sent automatically, including email and short message. With UPSsmart, users don't need to worry about any loss to the system because of the interruption of the mains, so users can make the necessary processing the first time, and learn the history of equipment operation information through the query of historical data and historical events.

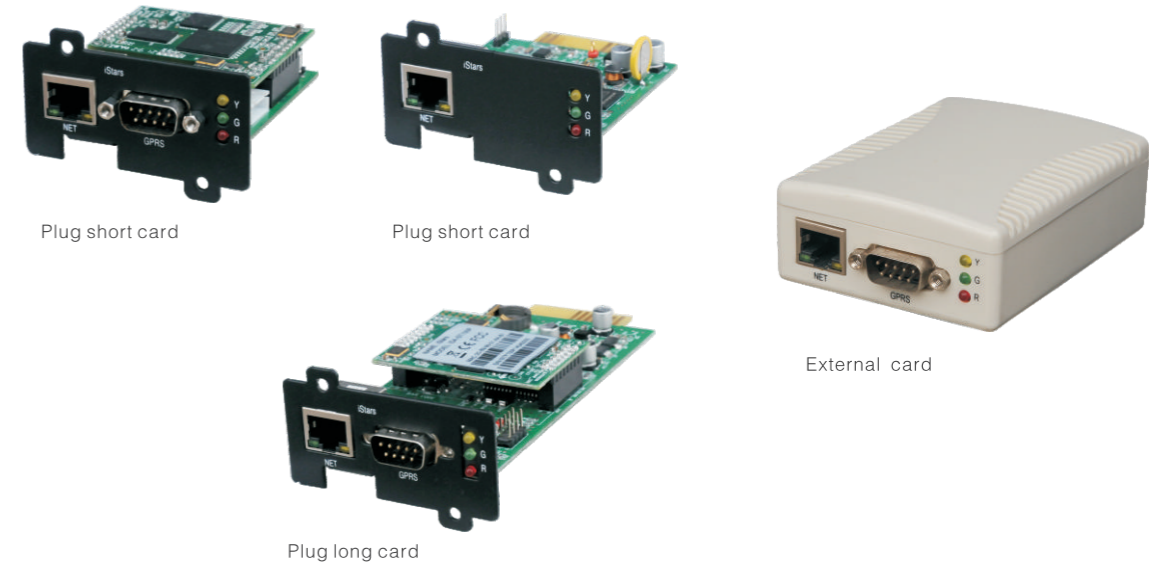
Application platform

Windows 98; Windows NT; Windows 2000; Windows ME; Windows XP; Windows 2003; Windows Vista; Windows 7; Linux; Ubuntu Linux; Centos;

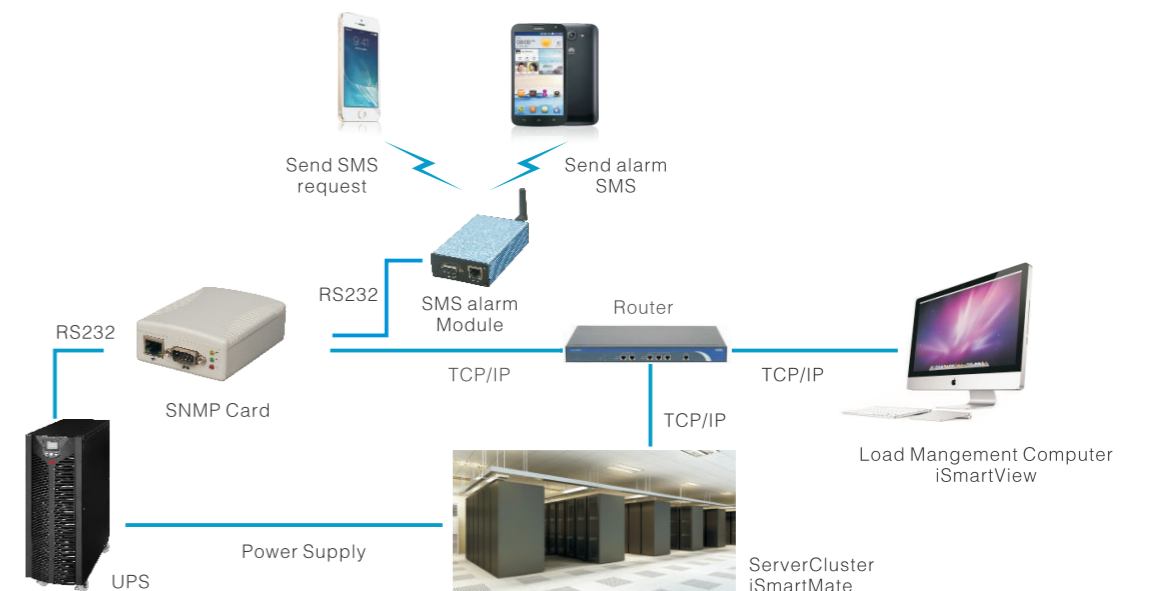
Features

- Mains, battery, inverter, bypass, and self test etc working status;
- Voltage, frequency, load, battery and other information can real time monitoring;
- Automatically save the common application before shutting down the system, hibernate or shutdown state;
- Can be carried out on the UPS diagnostic testing and can choose a variety of test methods;
- Can be set timing automatic execution of computer and UPS sequence on/off;
- You can query operation and the historical events and the parameters of historical records
- Local alarm and remote alarm functions both available;
- Can be set auto start;

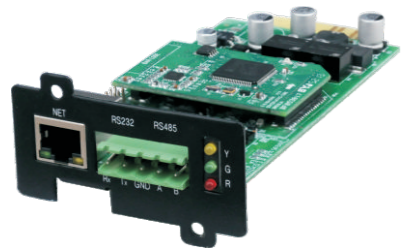
SNMP Card



Application schematic diagram



Modbus Card



Plug long Card

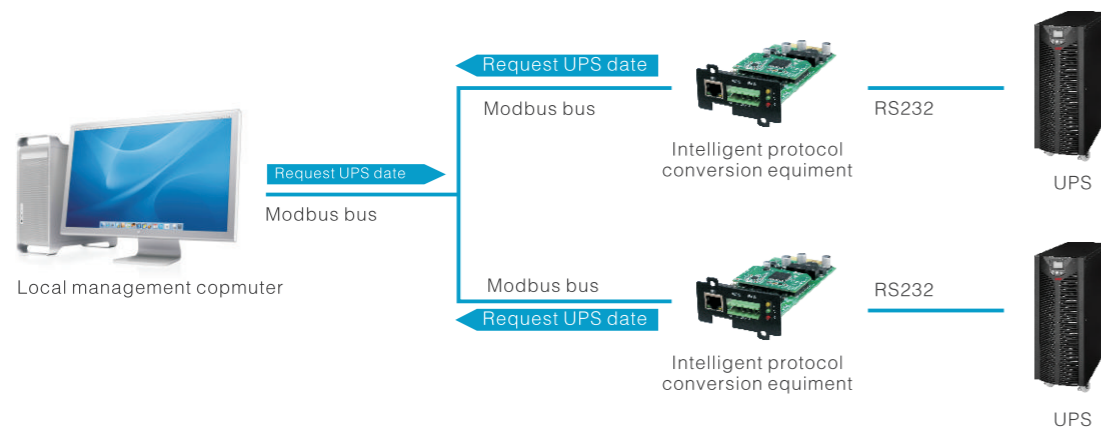


External short card

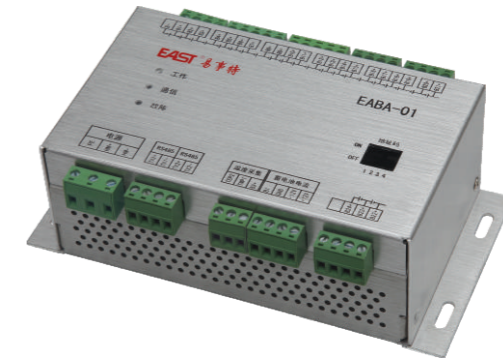


Plug short Card

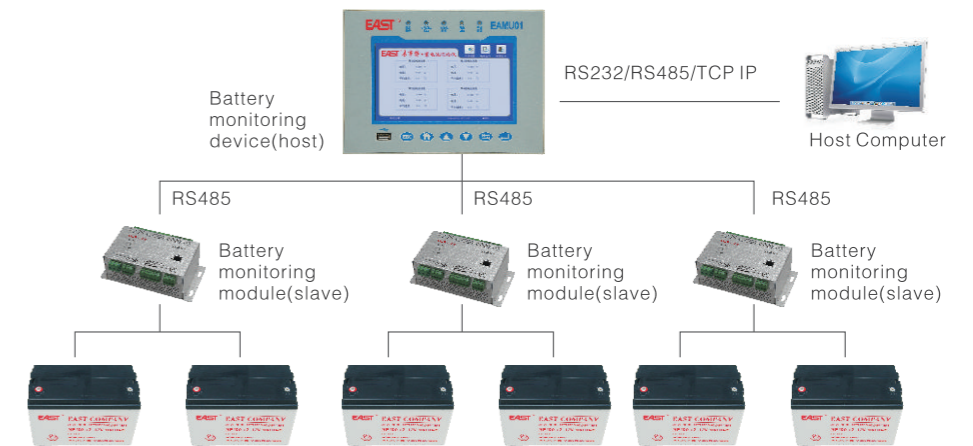
Application schematic diagram



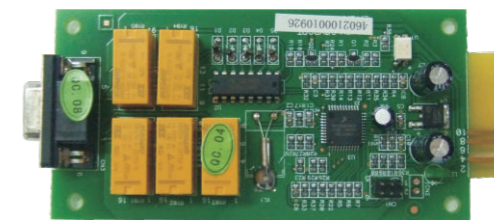
Battery Monitoring Module



Application schematic diagram



AS400 Card



Product Introduction

Through AS400 card, you can get the voltage free dry-contact signals for the programmable controller and management system.

Application Domain

- IBM Server, Personal PC & Workstations equipments
- Auto-control Industrial equipment & communication application
- User can design the application program by the interface of AS400 card.

User Interface

This is the circuit of basic application to implement the remote monitor and control.

